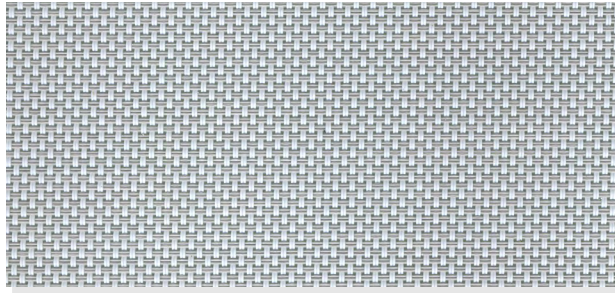
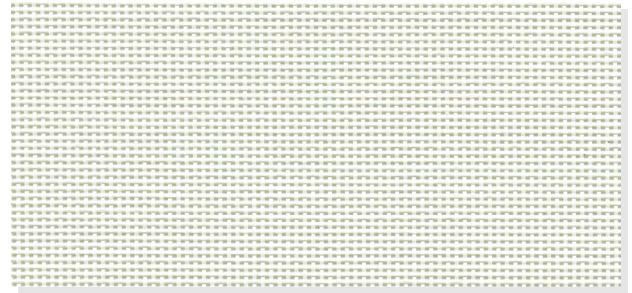


ROLL A SHADE
SIGNATURE SERIES
EXTERIOR

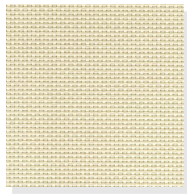
Please check specifications for color availability as not all colors are available in all openness factors.



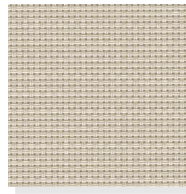
Platinum 6%



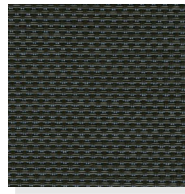
Daylight 15%



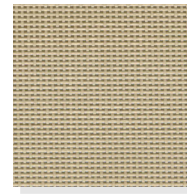
Bondi 6%



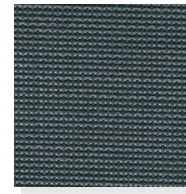
Ivory 6%



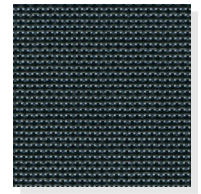
Bark 6%



Dawn 15%



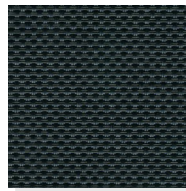
Shadow 15%



Night Sky 15%



Titan Grey 6%



Carbon Black 6%

SPECIFICATIONS

FIRE CLASSIFICATION

NFPA 701

BACTERIA AND FUNGAL RESISTANCE

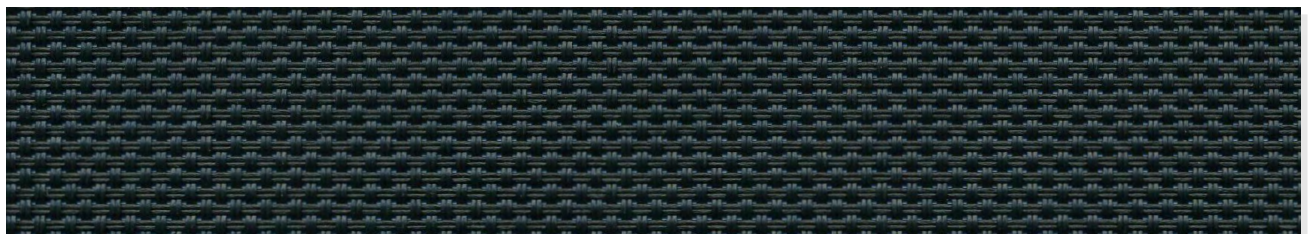
No growth

ENVIRONMENTAL CERTIFICATIONS

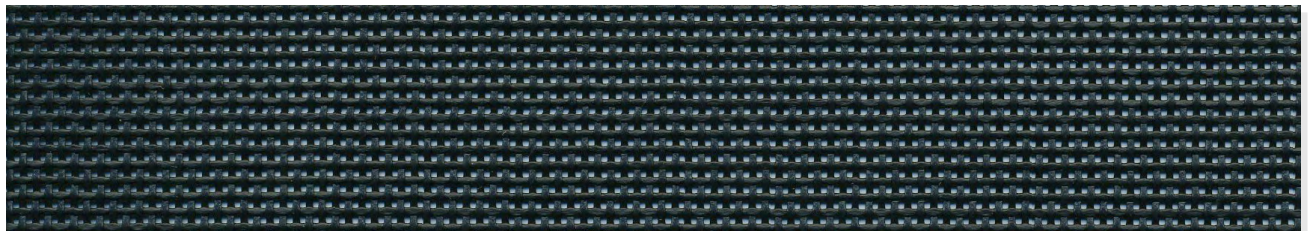
GREENGUARD Gold Certified for low chemical emissions UL.COM/GG UL2818

COMPOSITION

1x1/2x2 PVC Coated Polyester



Carbon Black 6%



Night Sky 15%

SIGNATURE SERIES 6%

OPENNESS FACTOR
6%

WEIGHT
17.8oz/sq yd.
(504g/sqm) (+/- 5%)

THICKNESS
0.035 in (0.89mm) +/-5%

WIDTHS
96" (244cm),
126" (320cm)

STANDARD ROLL LENGTH
33 lyds (30m)

COLOR CODE	COLOR	UVB	SF	UPR
PLTM	Platinum	93.1	77.3	14+
BNDI	Bondi	92.7	77.1	14+
IVRY	Ivory	92.7	77.1	14+
BARK	Bark	89.0	84.0	14+
TGRY	Titan Gray	93.1	83.7	14+
CBBK	Carbon Black	93.5	84.4	14+

SIGNATURE SERIES 15%

OPENNESS FACTOR
15%

WEIGHT
15.5oz/sq yd.
(439g/sqm) (+/- 5%)

THICKNESS
0.030 in (0.76mm) +/-5%

WIDTHS
126" (320cm)

STANDARD ROLL LENGTH
33 lyds (30m)

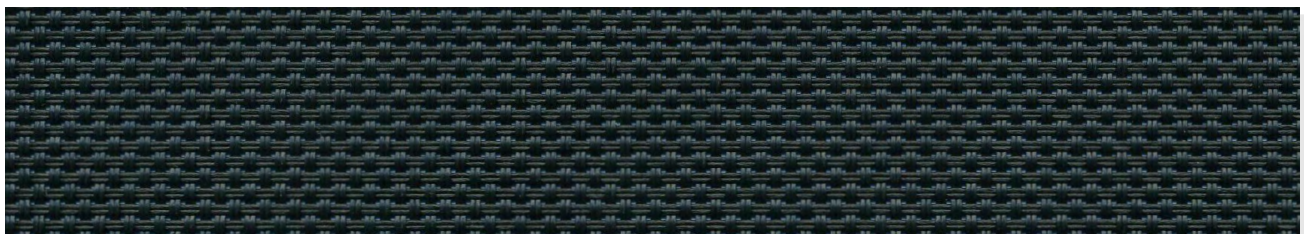
COLOR CODE	COLOR	UVB	SF	UPR
DLHT	Daylight	75.0	10.0	4+
DAWN	Dawn	76.0	33.0	4+
SHDW	Shadow	N/A	N/A	N/A
NSKY	Night Sky	N/A	N/A	N/A

UVB = Ultraviolet Block
SF = Shade Factor
UPR = Ultraviolet Protection Factor

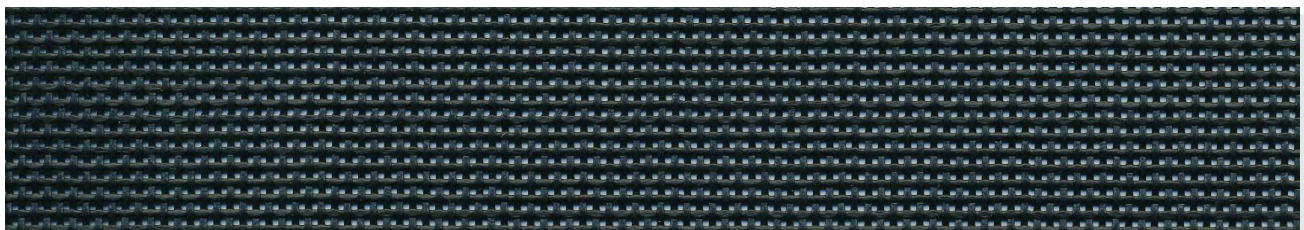
 ROLL A SHADE

Roll A Shade® logo is a registered trademark of Roll A Shade® Inc.
GREENGUARD is a registered trademark of GREENGUARD Environmental Institute

rollashade.com
1.888.245.5077
©2025 RASESCVER.3



Carbon Black 6%



Night Sky 15%