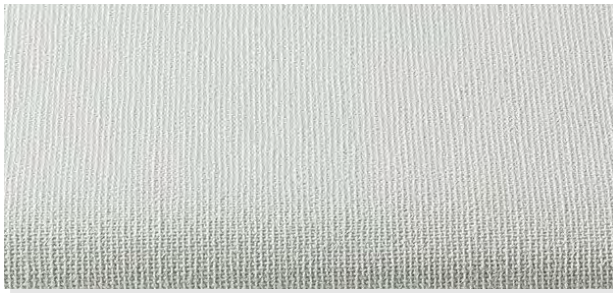


ROLL A SHADE

# SIGNATURE SERIES

ORIENT BLACKOUT

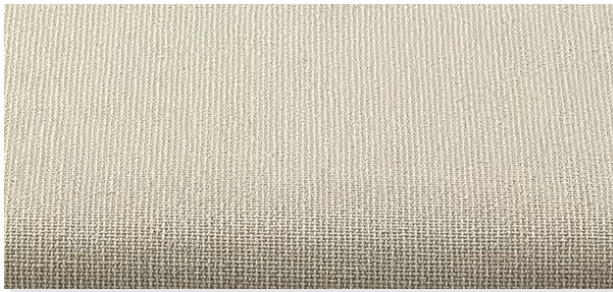
Please check specifications for color availability as not all colors are available in all openness factors.



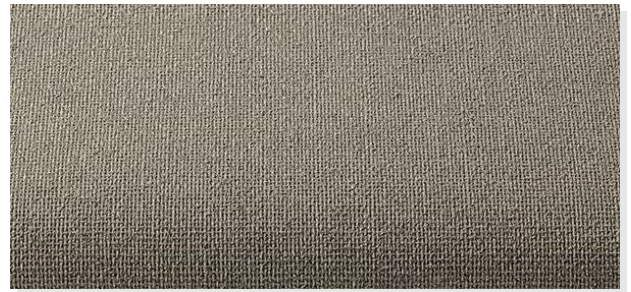
White



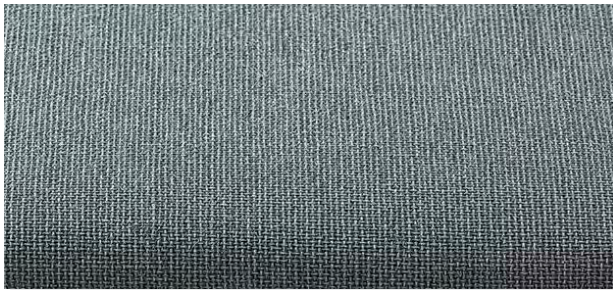
Light Gray



Soft Beige



Sand



Cool Gray



Dark Gray

**\*Performance evaluations conducted in accordance to requirements**

TS = Solar Transmittance  
 RS = Solar Reflectance  
 AS = Solar Absorptance  
 TV = Visual Transmittance  
 GTOT Value = The total transmission value of solar energy through a combination of window and sun protection.  
 FC-Value = Reduction factor (from 0-1) of the fabric concerning solar energy

The solar optical properties are used to calculate the shading coefficient. For complete technical information, current test results, performance specifications and larger samples, contact Roll-A-Shade® Incorporated.

**SIGNATURE SERIES ORIENT BLACKOUT**

**OPENNESS FACTOR**

0%

**WEIGHT**

13.5oz/sq yd.  
 (320g/sqm) (+/- 5%)

**THICKNESS**

0.0185IN (0.47MM) +/-5%

**WIDTHS**

94.5" (240CM), 118"  
 (300CM)

**STANDARD ROLL LENGTH**

33 lyds (30m)

| COLOR NO.         | COLOR      | SOLAR OPTICAL PROPERTIES* |    |    |    | TRANSMISSION VALUE |          |          |
|-------------------|------------|---------------------------|----|----|----|--------------------|----------|----------|
|                   |            | TS                        | RS | AS | TV | GTOT VALUE         | FC-VALUE | FC-CLASS |
| 134440-240/300 FR | White      | 0                         | 71 | 29 | 0  | 0,34               | 0,46     | 2        |
| 134504-240/300 FR | Light Gray | 0                         | 71 | 29 | 0  | 0,34               | 0,46     | 2        |
| 134513-240/300 FR | Soft Beige | 0                         | 71 | 29 | 0  | 0,34               | 0,46     | 2        |
| 134526-240/300 FR | Sand       | 0                         | 71 | 29 | 0  | 0,34               | 0,46     | 2        |
| 134537-240/300 FR | Cool Gray  | 0                         | 71 | 29 | 0  | 0,34               | 0,46     | 2        |
| 134506-240/300 FR | Dark Gray  | 0                         | 71 | 29 | 0  | 0,34               | 0,46     | 2        |

| COLOR NO.         | COLOR      | SINGLE GLAZING           |      | DOUBLE GLAZING WITH AIR INTERSPACE |      | DOUBLE GLAZING WITH LOW EMISSION DEGREE AND ARGON INTERSPACE |      | TRIPLE GLAZING WITH LOW EMISSION DEGREE AND ARGON INTERSPACE |      |
|-------------------|------------|--------------------------|------|------------------------------------|------|--|------|--|------|
|                   |            | Ug=5,8 W/(m2K)<br>g=0,85 |      | Ug=2,9 W/(m2K)<br>g=0,76           |      | Ug=1,2 W/(m2K)<br>g=0,59                                     |      | Ug=0,8 W/(m2K)<br>g=0,55                                     |      |
|                   |            | GTOT                     | FC   | GTOT                               | FC   | GTOT   | FC   | GTOT   | FC   |
| 134440-240/300 FR | White      | 0,28                     | 0,32 | 0,31                               | 0,41 | 0,32   | 0,55 | 0,32   | 0,58 |
| 134504-240/300 FR | Light Gray | 0,26                     | 0,31 | 0,30                               | 0,39 | 0,32   | 0,54 | 0,31   | 0,57 |
| 134513-240/300 FR | Soft Beige | 0,26                     | 0,31 | 0,30                               | 0,39 | 0,32   | 0,54 | 0,31   | 0,57 |
| 134526-240/300 FR | Sand       | 0,26                     | 0,30 | 0,29                               | 0,39 | 0,31   | 0,53 | 0,31   | 0,56 |
| 134537-240/300 FR | Cool Gray  | 0,26                     | 0,31 | 0,30                               | 0,39 | 0,32   | 0,54 | 0,31   | 0,57 |
| 134506-240/300 FR | Dark Gray  | 0,26                     | 0,30 | 0,30                               | 0,39 | 0,32   | 0,53 | 0,31   | 0,57 |

**TOTAL ENERGY PERMEABILITY DEGREE GTOT AND REDUCE FACTOR FC**

**FIRE CLASSIFICATION**

DIN 4102 B1, EN 13773-1, CALIFORNIA U.S. TITLE 19, CAN/ULC-S109, NFPA701, BS 5867 PART 2

**BACTERIA AND FUNGAL RESISTANCE**

N/A

**ENVIRONMENTAL CERTIFICATIONS**

Oeko-Tex® Standard 100, REACH

**COMPOSITION**

100% Polyester

**SPECIAL VALUES**

Acrylic Foam Coating, PVC Free, Lead Free

rollashade.com | 1.888.245.5077 | ©2025 RASBOSCOVER.2



Roll A Shade® logo is a registered trademark of Roll A Shade® Inc.  
 GREENGUARD is a registered trademark of GREENGUARD Environmental Institute

