



# CORDLESS

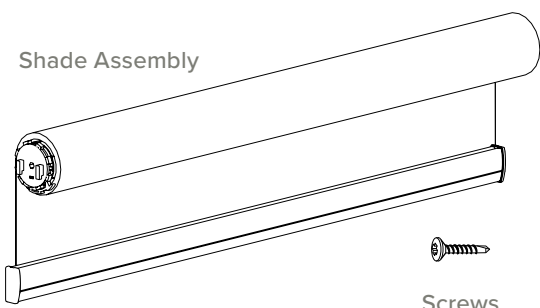
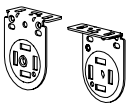



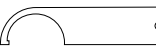


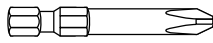

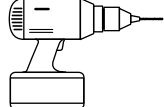
## INSTALLATION INSTRUCTIONS

Rollashade.com  
info@rollashade.com  
951.245.5077

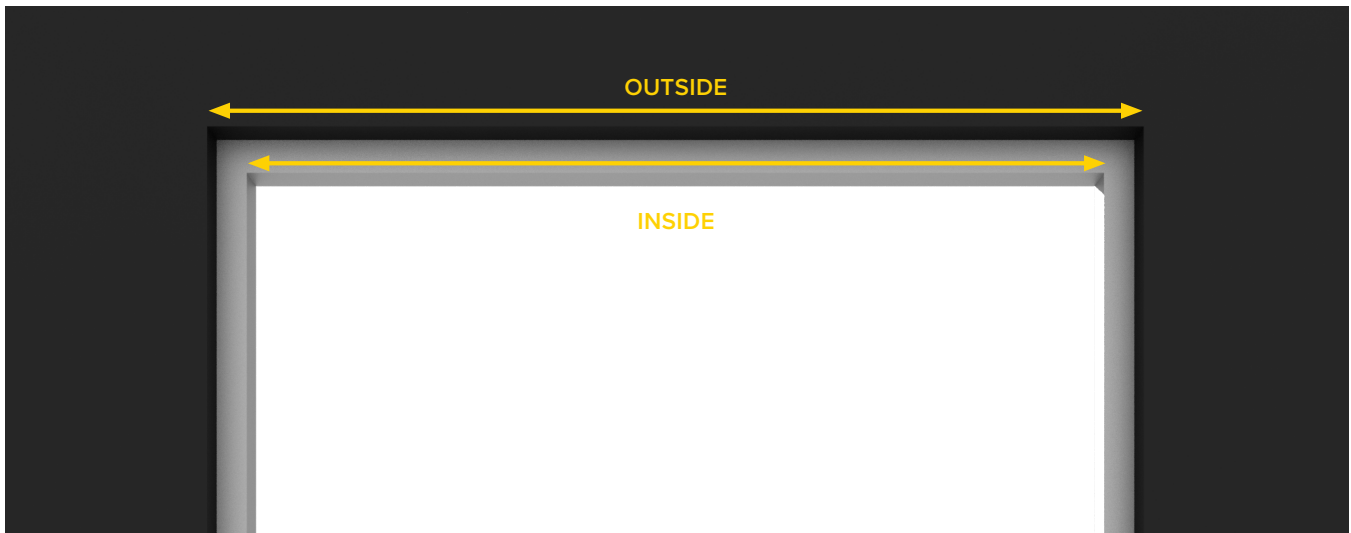
© Copyright Roll A Shade® Inc. All Rights Reserved.

 ROLL A SHADE

**CORDLESS | OPEN ROLL APPLICATION**

HARDWARE INCLUDED	TOOLS SUPPLIED	TOOLS REQUIRED
<p data-bbox="175 367 360 399">Shade Assembly</p>  <p data-bbox="722 336 852 441">Brackets</p>  <p data-bbox="706 514 868 619">Bracket Covers</p>  <p data-bbox="576 556 657 588">Screws</p> 	<p data-bbox="950 294 1112 367">Allen Wrench</p>  <p data-bbox="958 451 1112 504">Spanner Tool</p>  <p data-bbox="950 556 1120 661">Tension Lock</p> 	<p data-bbox="1242 262 1404 304"></p> <p data-bbox="1242 315 1404 346">3/8" Hex Head</p> <p data-bbox="1218 357 1429 399"></p> <p data-bbox="1250 409 1396 441">Phillips Head</p> <p data-bbox="1218 451 1429 493"></p> <p data-bbox="1258 472 1388 504">1/8" Drill Bit</p> <p data-bbox="1242 514 1404 619"></p> <p data-bbox="1299 630 1347 661">Drill</p>

**1 INSIDE OR OUTSIDE APPLICATION**



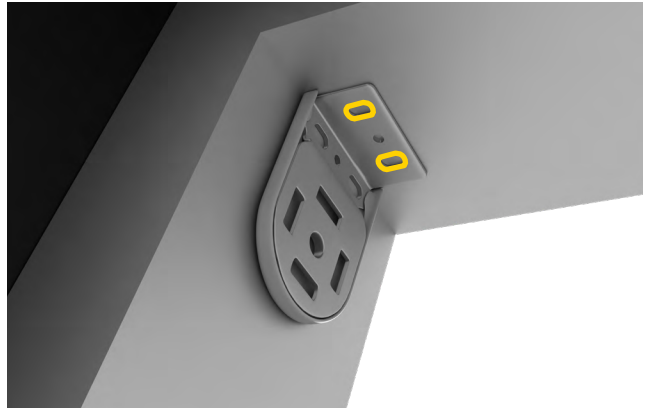
## 2 MOUNTING LOCATION

Place your first bracket in its mounting location and mark the screw holes. Place your brackets in its mounting location and repeat the process.

A



B



C



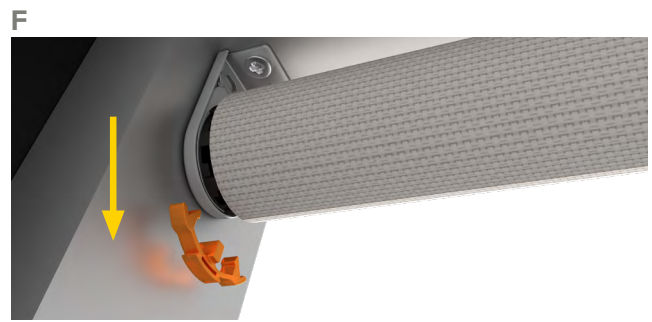
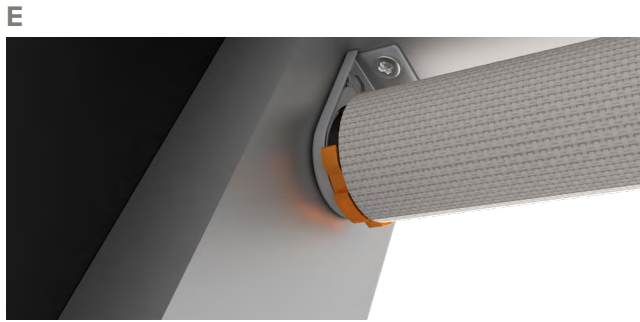
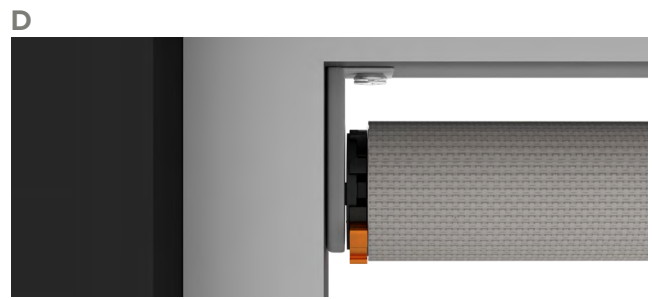
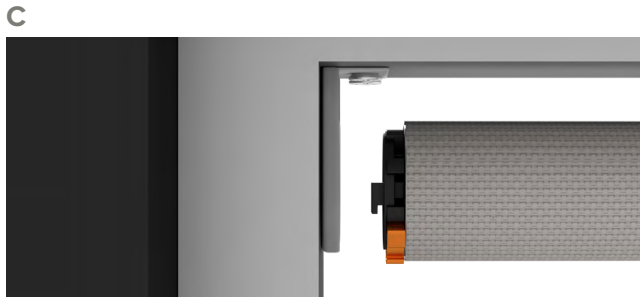
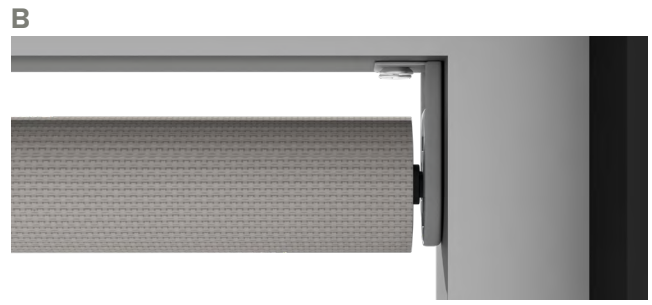
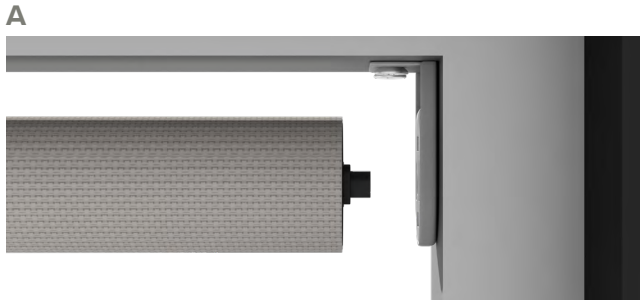
## 3 SCREW INSTALLATION

Next, pre-drill your screw holes using a 1/8" drill bit. Install the brackets with the provided screws using the phillips head driver.



#### 4 SHADE INSTALLATION

**A-B** Attach Idler side. **C-D** Attach control side. **E-F** Remove pre-tension clip.



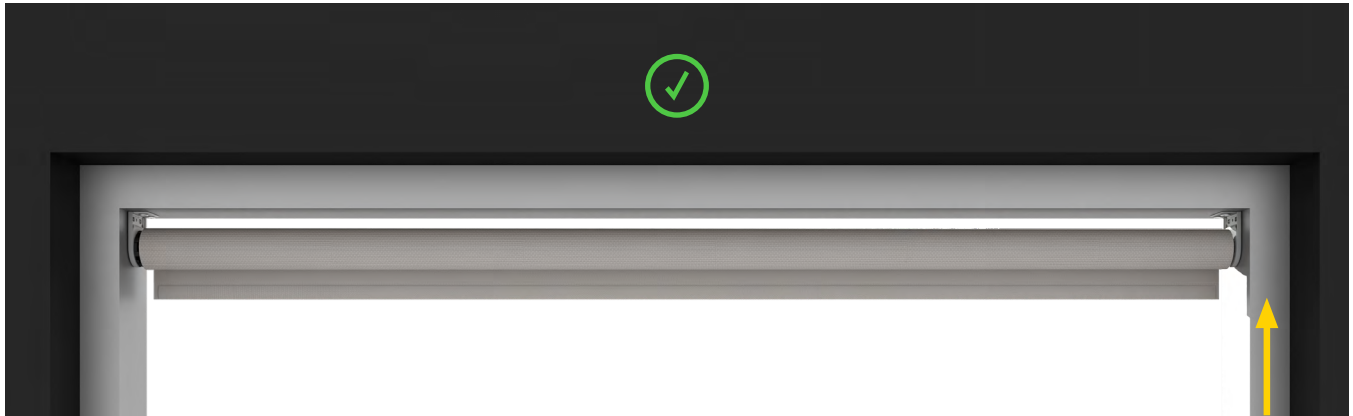
#### 5 PRE-TENSION CHECKS

**CHECK FUNCTIONALITY OF PRE-TENSIONED SHADE.**

**A** Pull Bottom Rail down to bottom location. **B** Push the Bottom Rail up to top position.

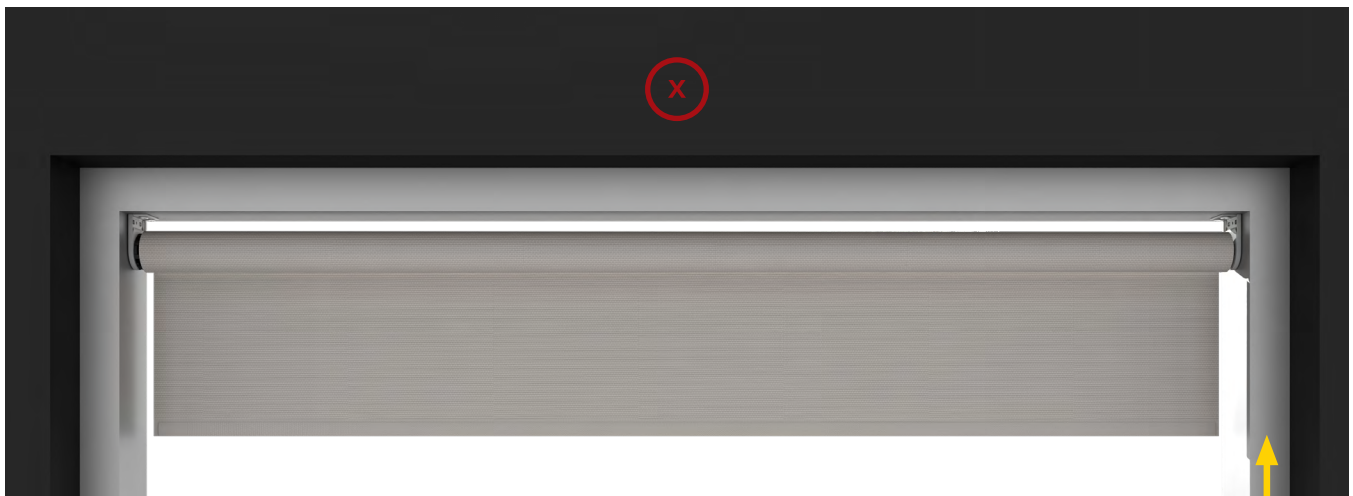


C If Bottom Rail raises at the desired speed, the correct number of pre-turns have been assigned.



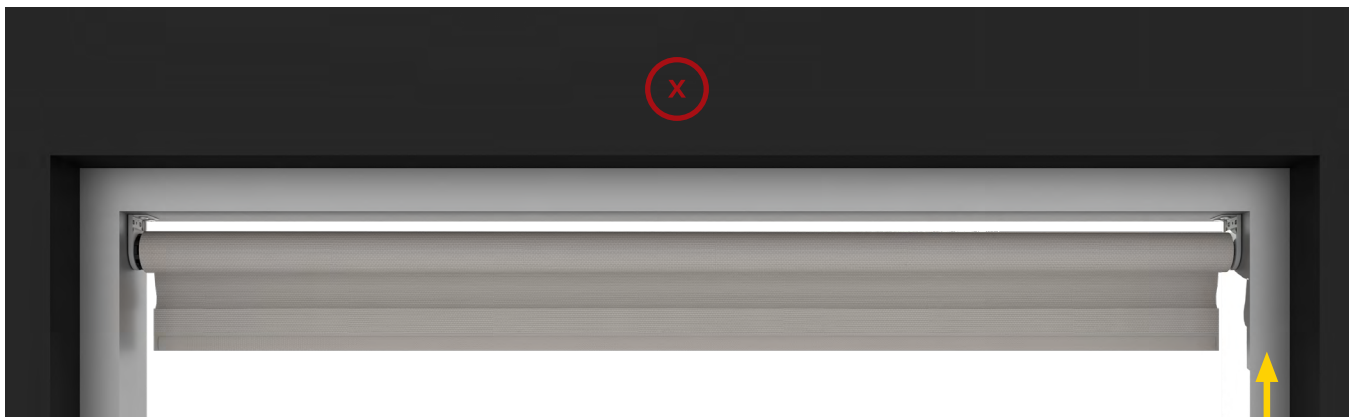
✓ Proceed to setting limits.

D If shade slows or falls from desired position then not enough pre-turns have been applied.



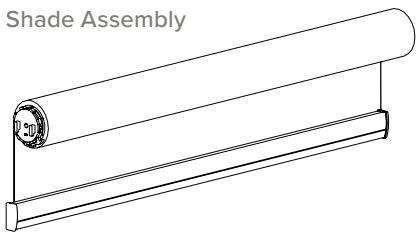
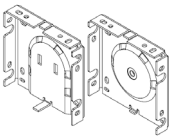


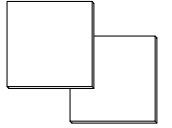

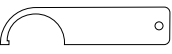


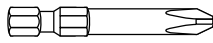

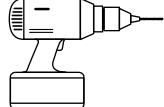
⊕ Add more pre-turns or move slider to lower number changing the spring size.

E Fast or automatic raising of the shade from desired position indicates excessive pre-turns.

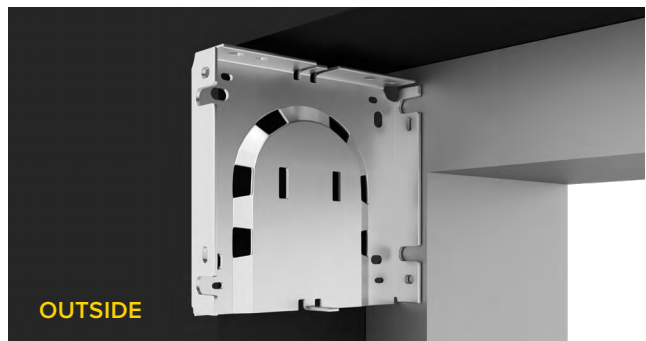
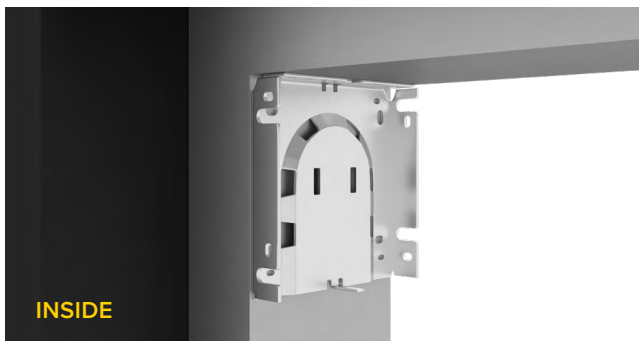
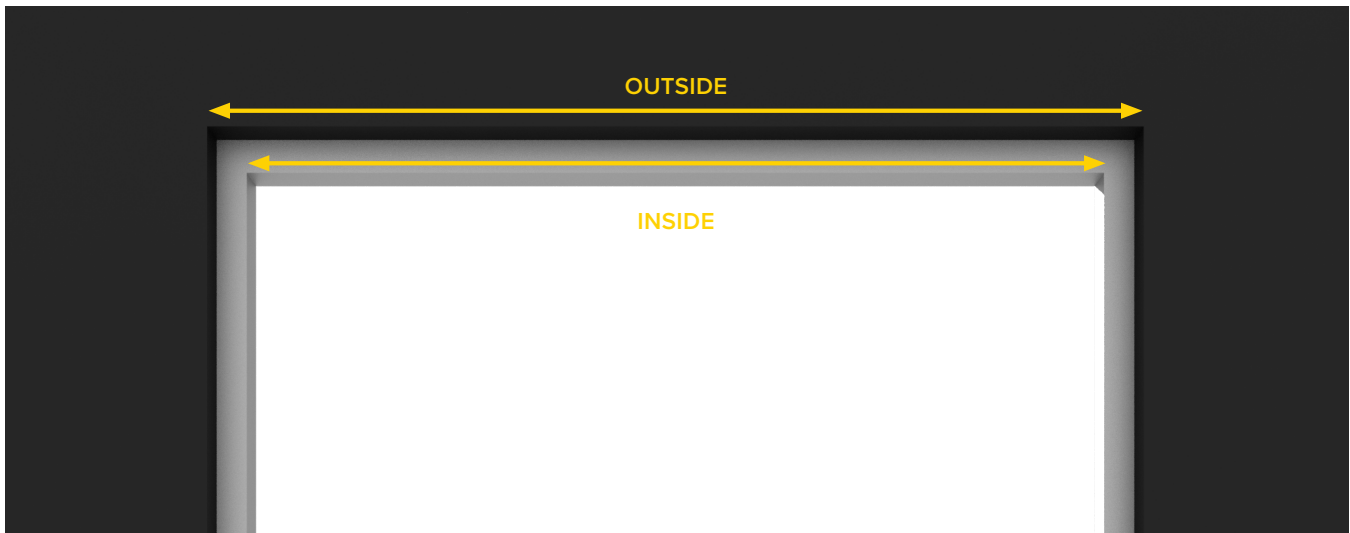


⊖ Remove pre-turns or move slider to higher number changing the spring size.  
IF ADJUSTMENT IS NEEDED SEE PAGE 21-22

## CORDLESS | 4" BOTTOM FASCIA APPLICATION

HARDWARE INCLUDED	TOOLS SUPPLIED	TOOLS REQUIRED
<p data-bbox="178 294 365 325">Shade Assembly</p>  <p data-bbox="649 315 820 451">Brackets</p>  <p data-bbox="211 577 284 609">Screws</p>  <p data-bbox="341 525 657 640">Bracket Covers</p>  <p data-bbox="698 514 868 640">Bracket Covers</p> 	<p data-bbox="950 294 1112 367">Allen Wrench</p>  <p data-bbox="958 451 1128 504">Spanner Tool</p>  <p data-bbox="950 556 1120 661">Tension Lock</p> 	<p data-bbox="1242 262 1404 304"></p> <p data-bbox="1242 315 1404 346">3/8" Hex Head</p> <p data-bbox="1218 357 1429 399"></p> <p data-bbox="1250 409 1396 441">Phillips Head</p> <p data-bbox="1218 451 1429 493"></p> <p data-bbox="1258 472 1388 504">1/8" Drill Bit</p> <p data-bbox="1242 514 1404 619"></p> <p data-bbox="1299 630 1347 661">Drill</p>

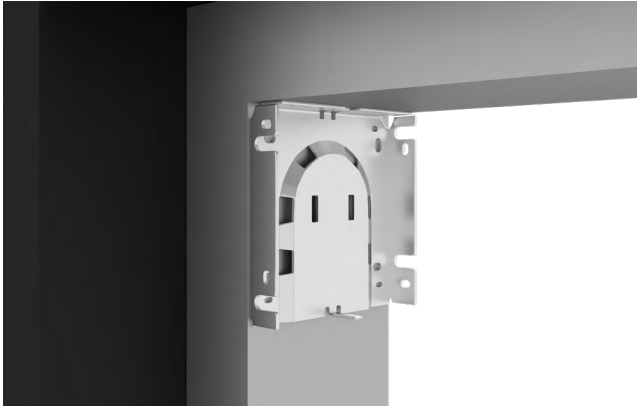
## 1 INSIDE OR OUTSIDE APPLICATION



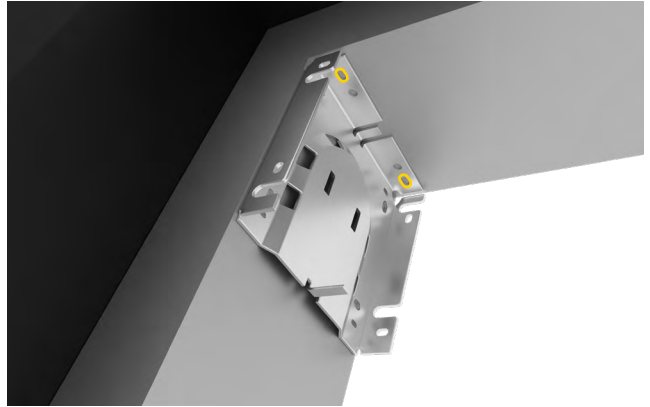
## 2 MOUNTING LOCATION

Place your first bracket in its mounting location and mark the screw holes. Place your brackets in its mounting location and repeat the process.

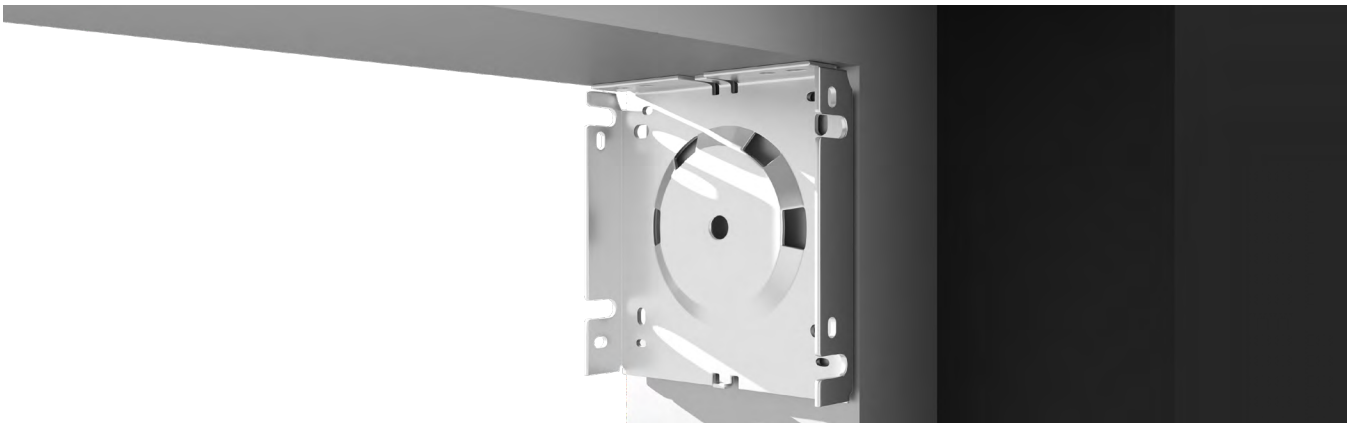
A



B

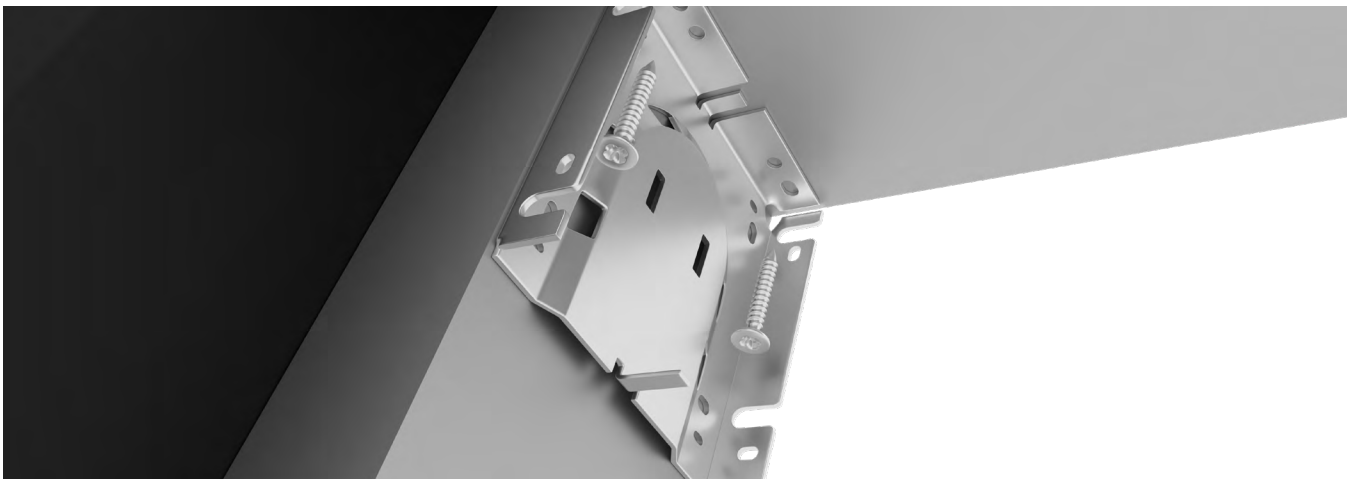


C



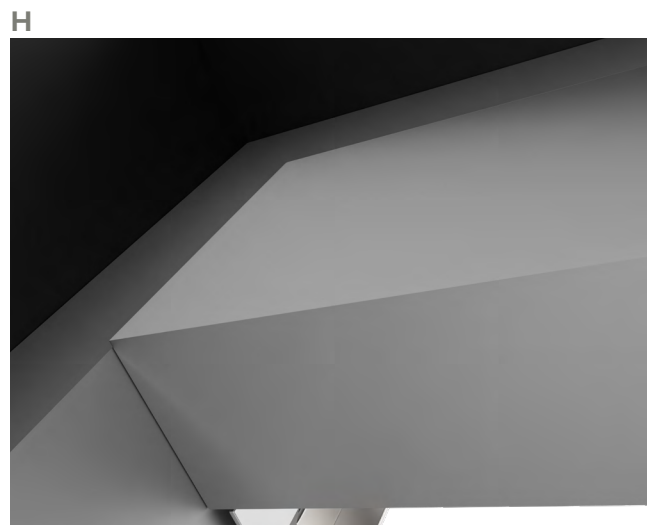
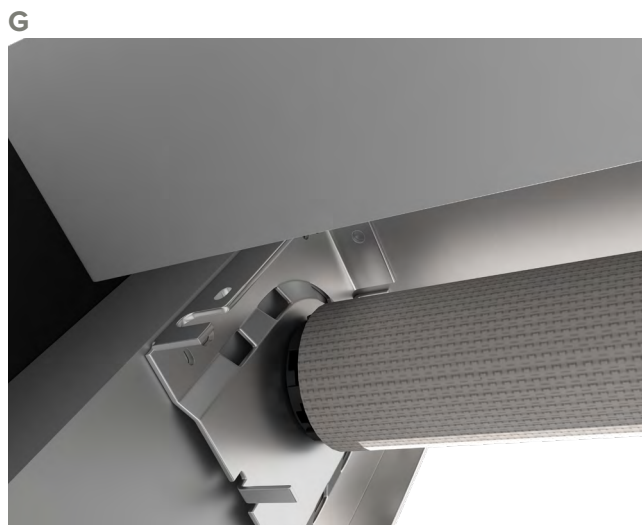
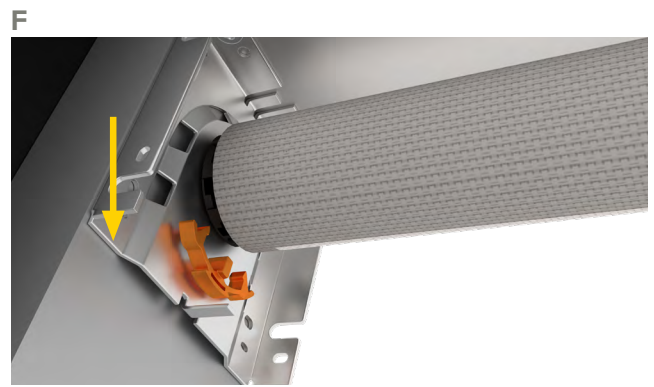
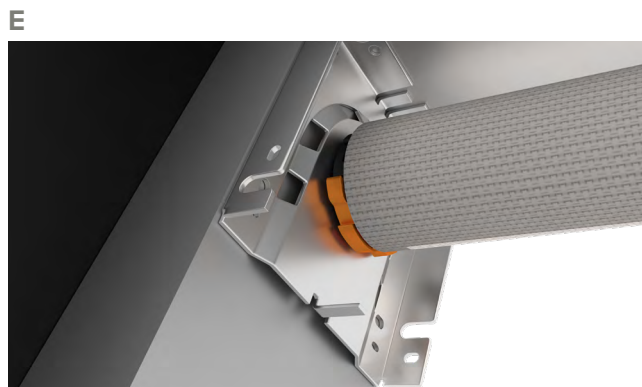
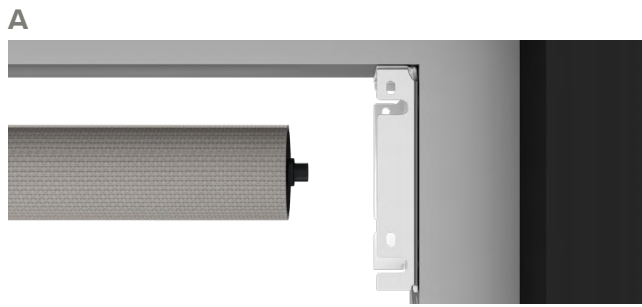
## 3 SCREW INSTALLATION

Next, pre-drill your screw holes using a 1/8" drill bit. Install the brackets with the provided screws using the phillips head driver.



#### 4 SHADE INSTALLATION

**A-B** Attach Idler side. **C-D** Attach control side. **E-F** Remove pre-tension clip. **G-H** Insert fascia.





## 5 PRE-TENSION CHECKS

### CHECK FUNCTIONALITY OF PRE-TENSIONED SHADE.

**A** Pull Bottom Rail down to bottom location. **B** Push the Bottom Rail up to top position.

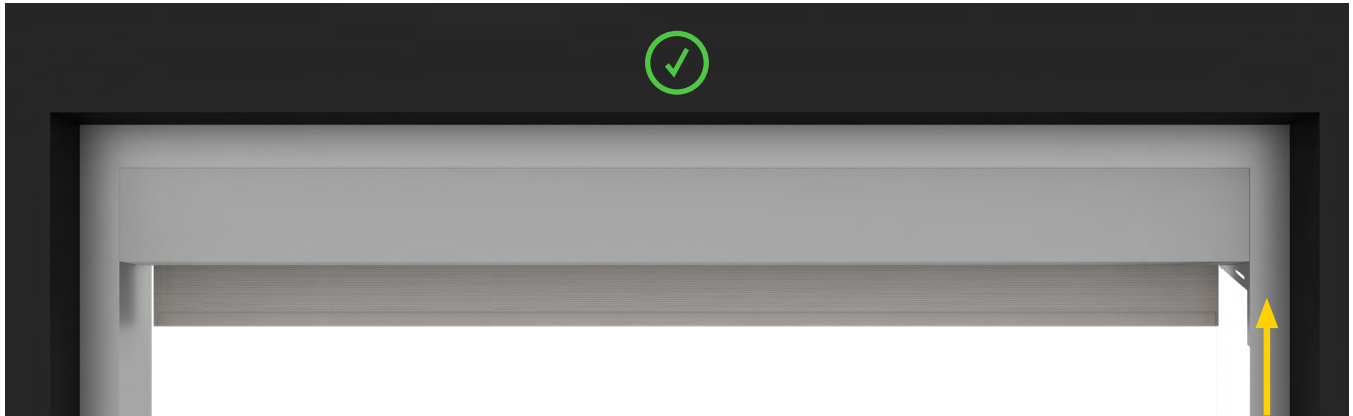
**A**



**B**

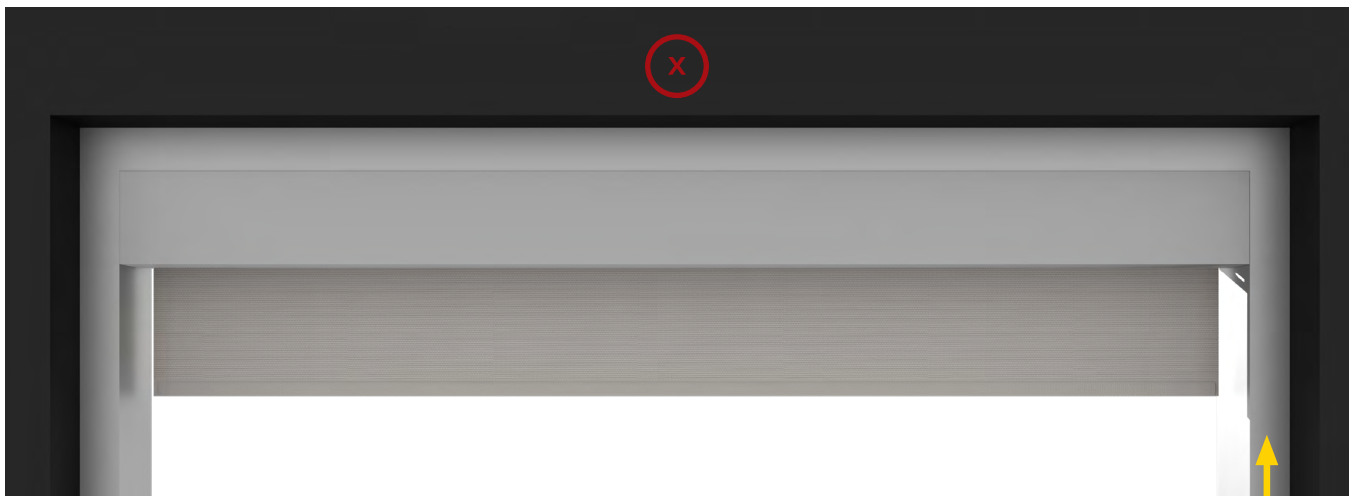


C If Bottom Rail raises at the desired speed, the correct number of preturns have been assigned.



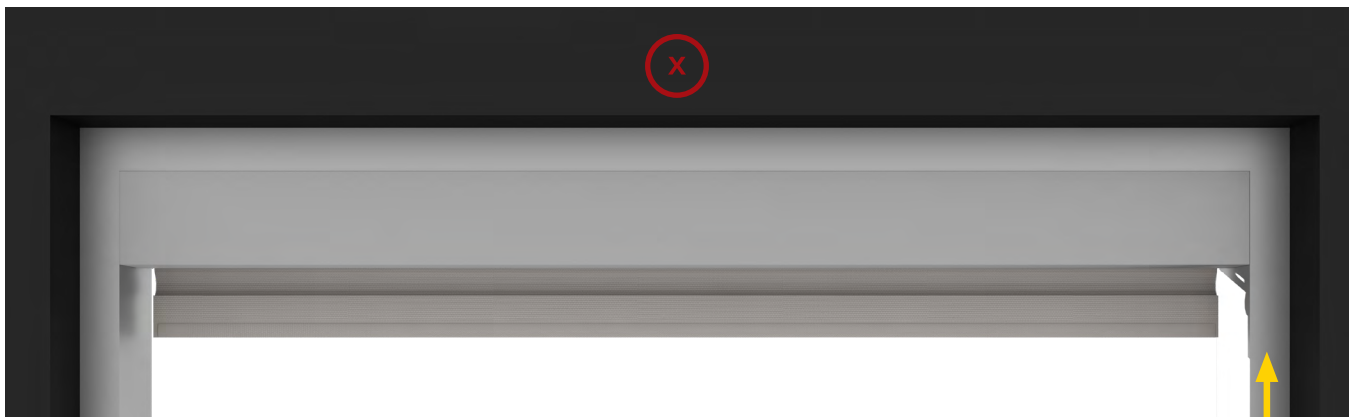
✓ Proceed to setting limits.

D If shade slows or falls from desired position then not enough pre-turns have been applied.



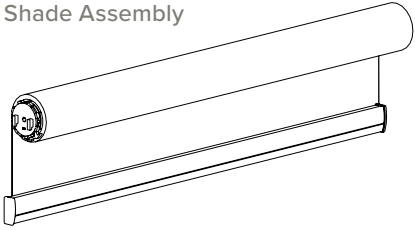


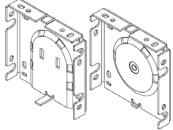
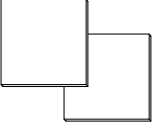



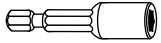
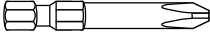

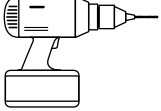
⊕ Add more pre-turns or move slider to lower number changing the spring size.

E Fast or automatic raising of the shade from desired position indicates excessive pre-turns.

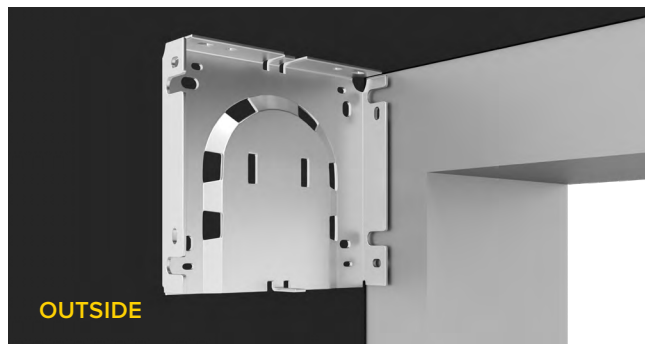
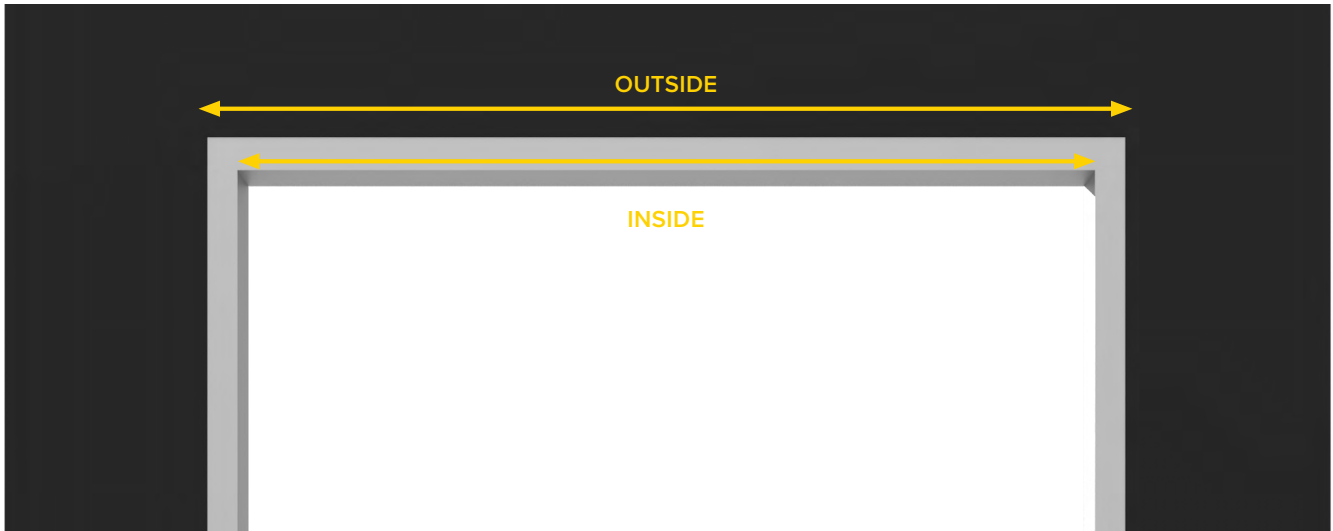


⊖ Remove pre-turns or move slider to higher number changing the spring size.  
IF ADJUSTMENT IS NEEDED SEE PAGE 21-22

# CORDLESS | 4" TOP FASCIA APPLICATION

HARDWARE INCLUDED	TOOLS SUPPLIED	TOOLS REQUIRED
<p>Shade Assembly</p>  <p>Screws</p>  <p>Bracket Covers</p>  <p>Brackets</p>  <p>Bracket Covers</p> 	<p>Allen Wrench</p>  <p>Spanner Tool</p>  <p>Tension Lock</p> 	<p>3/8" Hex Head</p>  <p>Phillips Head</p>  <p>1/8" Drill Bit</p>  <p>Drill</p> 

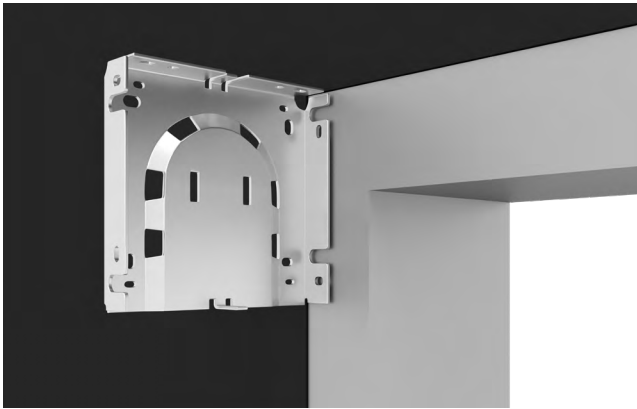
## 1 INSIDE OR OUTSIDE APPLICATION



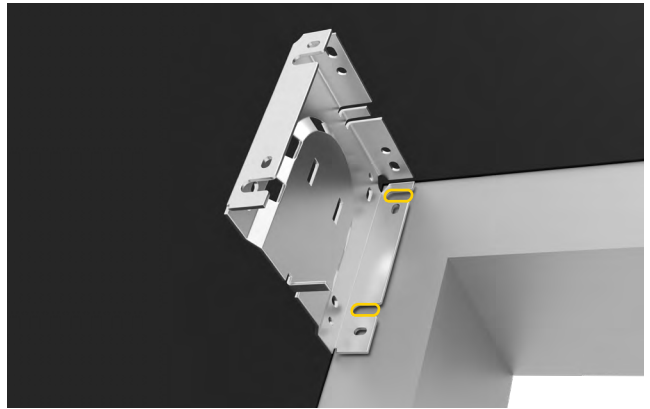
## 2 MOUNTING LOCATION

Place your first bracket in its mounting location and mark the screw holes. Place your brackets in its mounting location and repeat the process.

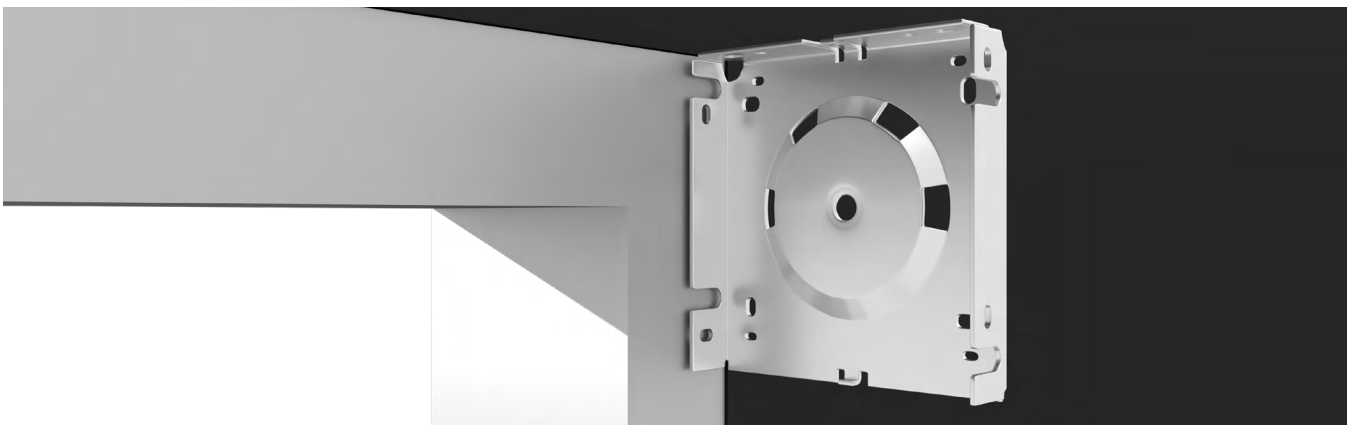
A



B

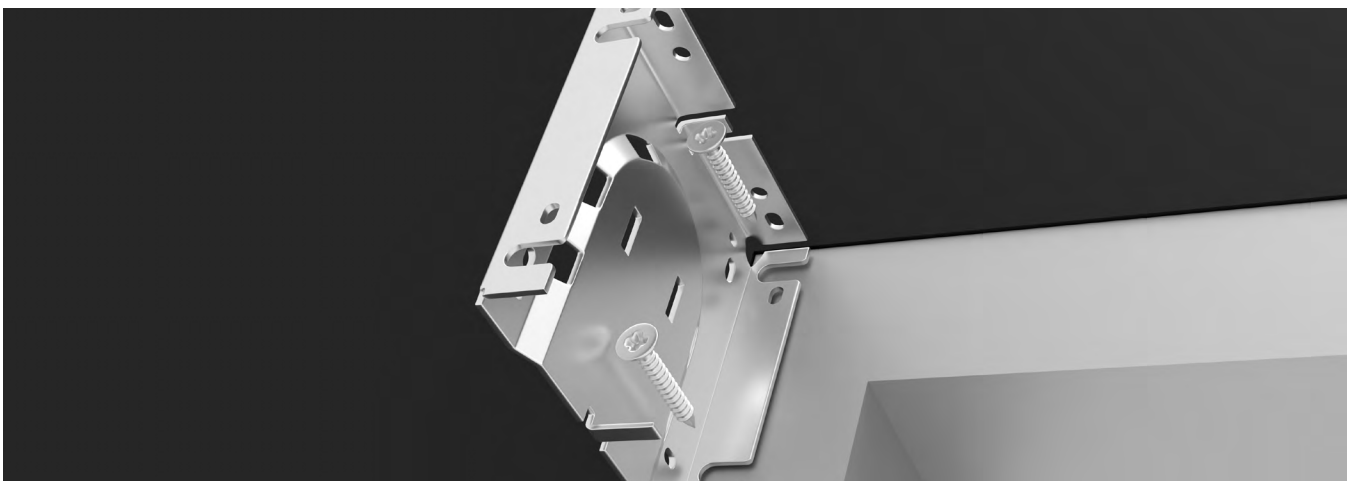


C



## 3 SCREW INSTALLATION

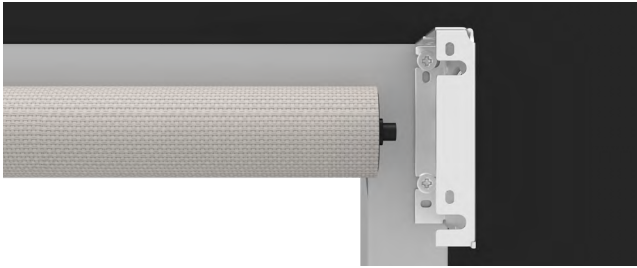
Next, pre-drill your screw holes using a 1/8" drill bit. Install the brackets with the provided screws using the phillips head driver.



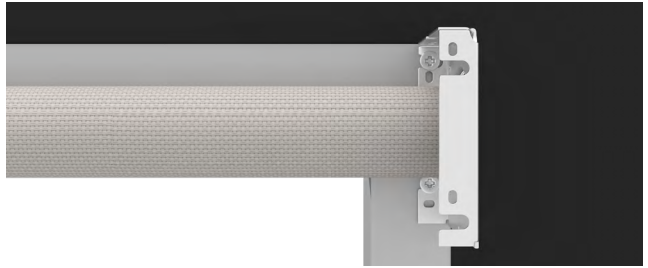
#### 4 SHADE INSTALLATION

**A-B** Attach Idler side. **C-D** Attach control side. **E-F** Remove pre-tension clip. **G-H** Insert fascia. **I-J** Insert bracket covers.

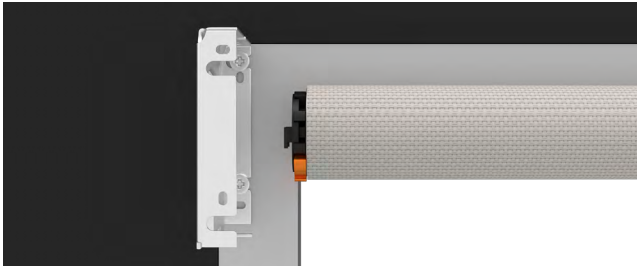
**A**



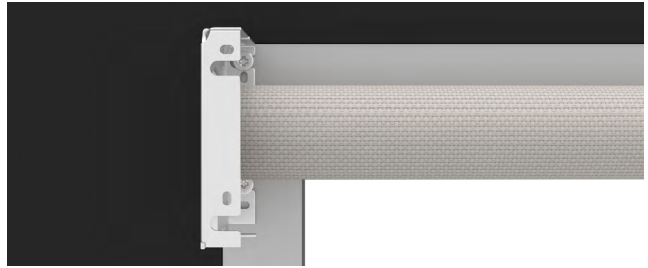
**B**



**C**



**D**



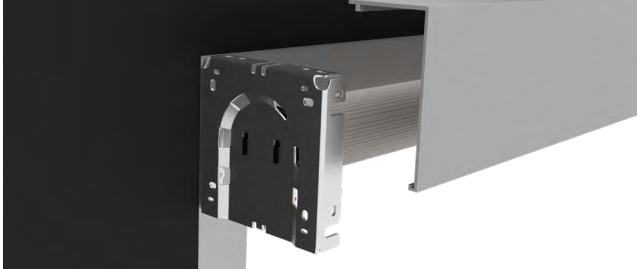
**E**



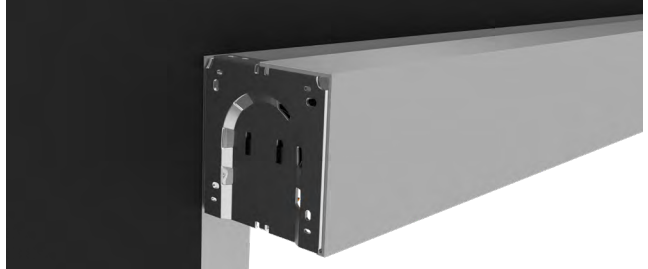
**F**



**G**



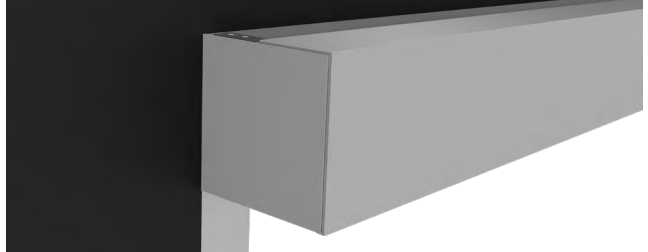
**H**



**I**



**J**



## 5 PRE-TENSION CHECKS

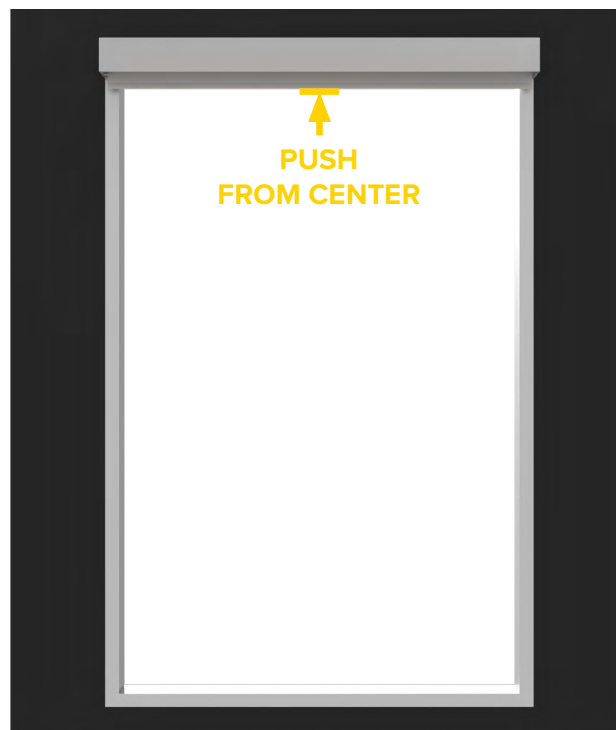
### CHECK FUNCTIONALITY OF PRE-TENSIONED SHADE.

**A** Pull Bottom Rail down to bottom location. **B** Push the Bottom Rail up to top position.

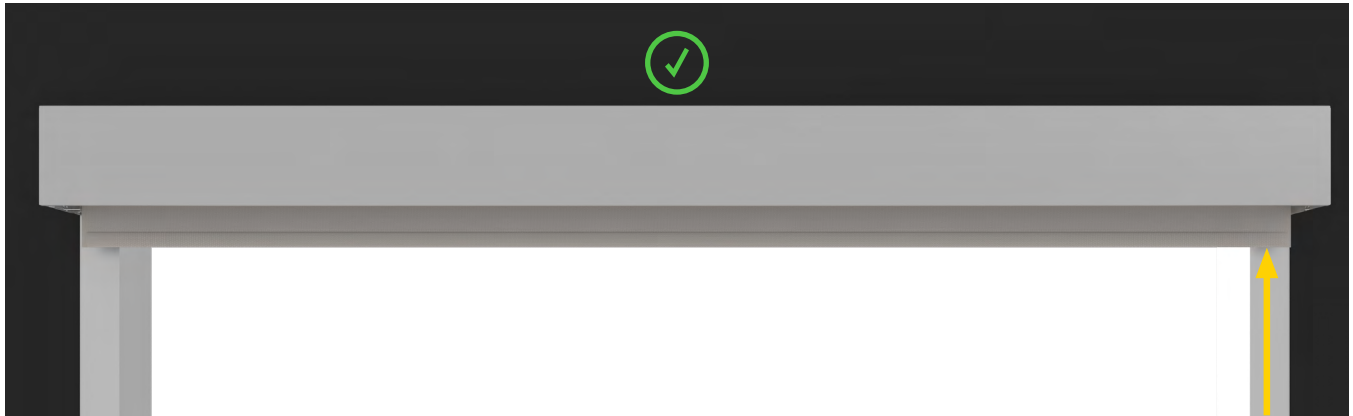
**A**



**B**

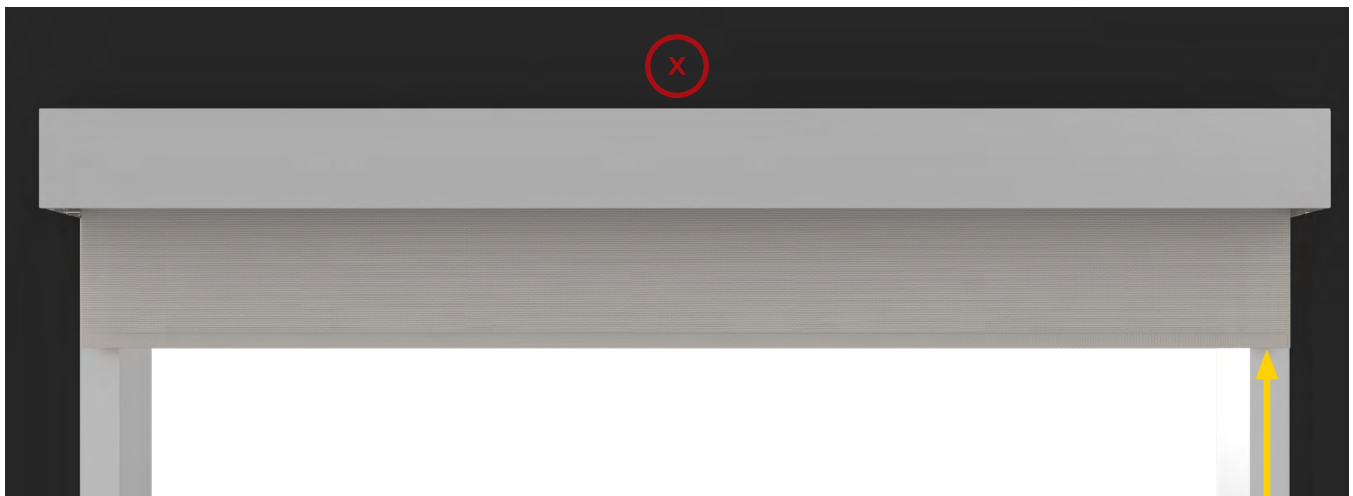


C If Bottom Rail raises at the desired speed, the correct number of pre-turns have been assigned.



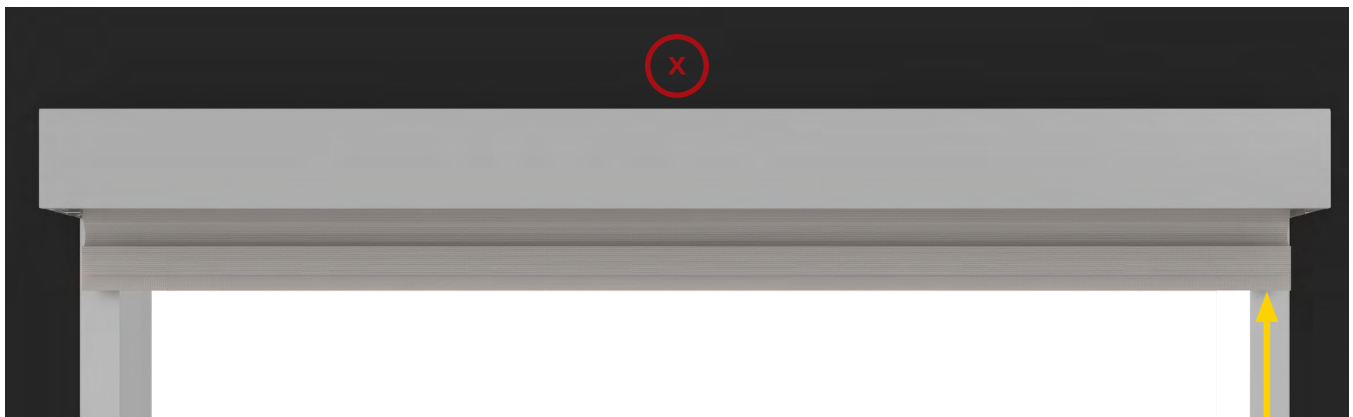
✓ Proceed to setting limits.

D If shade slows or falls from desired position then not enough pre-turns have been applied.



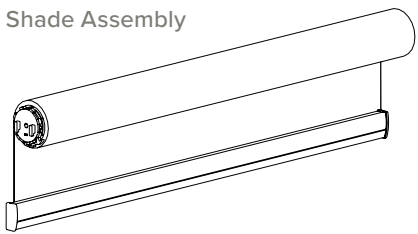
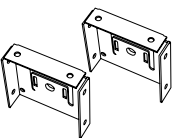
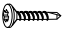

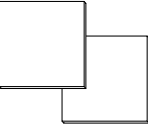

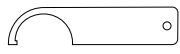


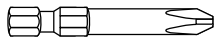

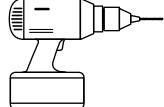
+ Add more pre-turns or move slider to lower number changing the spring size.

E Fast or automatic raising of the shade from desired position indicates excessive pre-turns.

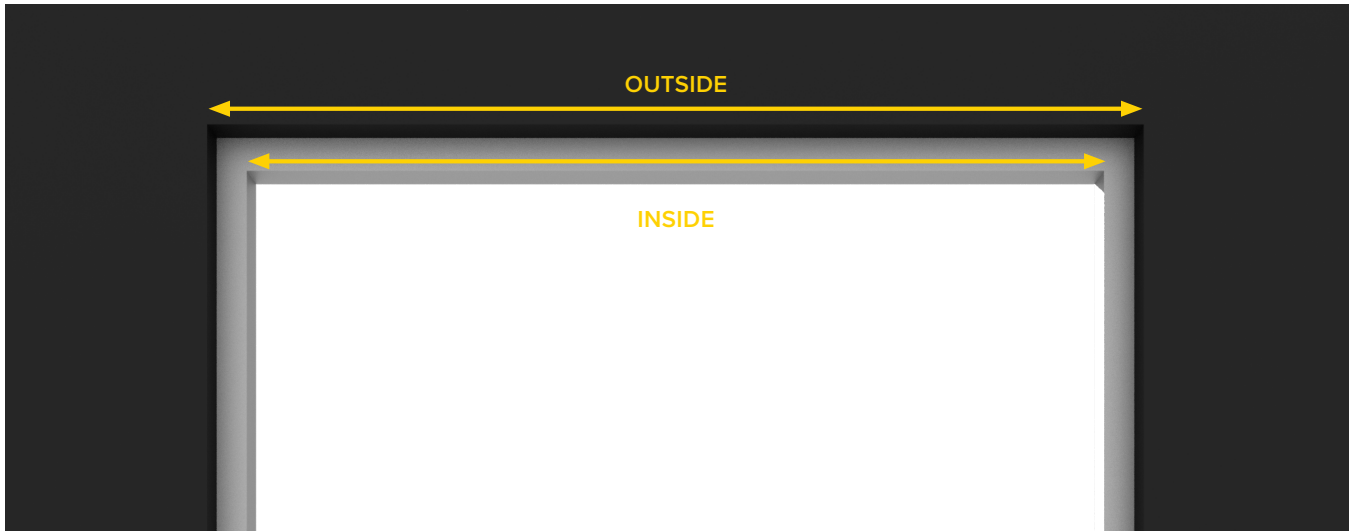


- Remove pre-turns or move slider to higher number changing the spring size.  
IF ADJUSTMENT IS NEEDED SEE PAGE 21-22

## CORDLESS | 3" TOP FASCIA APPLICATION

HARDWARE INCLUDED	TOOLS SUPPLIED	TOOLS REQUIRED
<p data-bbox="178 294 365 325">Shade Assembly</p>  <p data-bbox="673 451 779 483">Brackets</p>  <p data-bbox="211 640 292 672">Screws</p>  <p data-bbox="414 640 584 672">Bracket Covers</p>  <p data-bbox="698 640 868 672">Bracket Covers</p> 	<p data-bbox="950 388 1112 420">Allen Wrench</p>  <p data-bbox="958 514 1112 546">Spanner Tool</p>  <p data-bbox="958 672 1112 703">Tension Lock</p> 	<p data-bbox="1242 315 1404 346">3/8" Hex Head</p>  <p data-bbox="1250 409 1404 441">Phillips Head</p>  <p data-bbox="1258 472 1396 504">1/8" Drill Bit</p>  <p data-bbox="1299 630 1356 661">Drill</p> 

## 1 INSIDE OR OUTSIDE APPLICATION





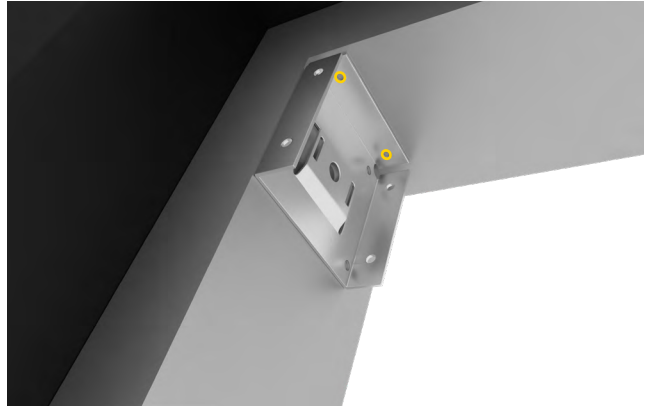
## 2 MOUNTING LOCATION

Place your first bracket in its mounting location and mark the screw holes. Place your brackets in its mounting location and repeat the process.

**A**



**B**



**C**



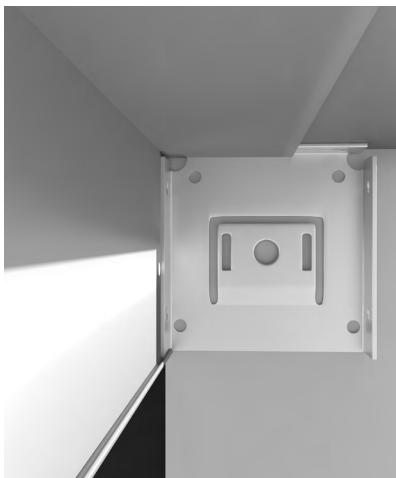
## 3 FASCIA & SCREW INSTALLATION

Next, pre-drill your screw holes using a 1/8" drill bit. Install the brackets with the provided screws using the phillips head driver.

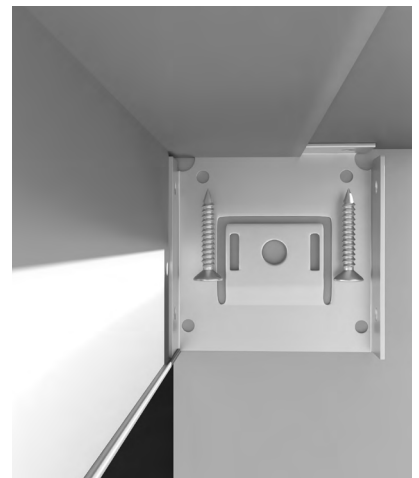
**A**



**B**



**C**



#### 4 SHADE INSTALLATION

**A-B** Attach Idler side. **C-D** Attach control side. **E-F** Remove pre-tension clip.

**A**



**B**



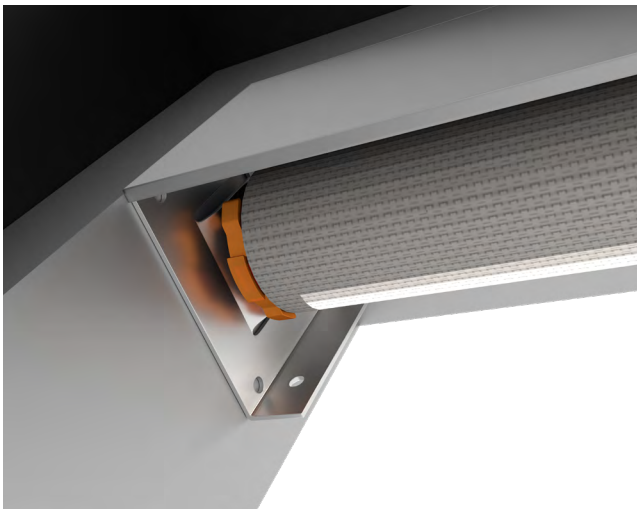
**C**



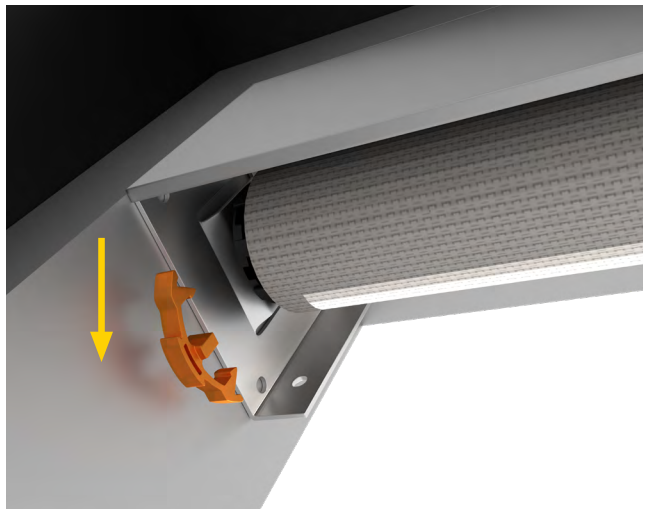
**D**



**E**



**F**



## 5 PRE-TENSION CHECKS

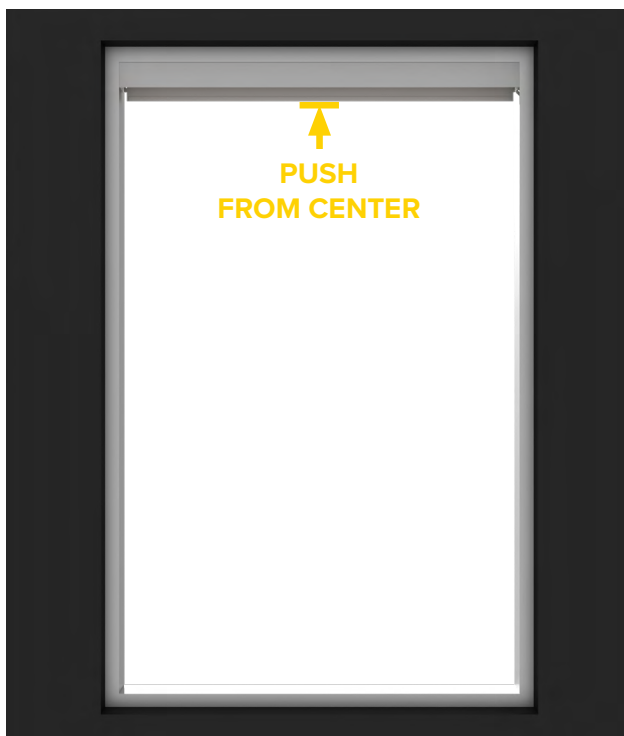
### CHECK FUNCTIONALITY OF PRE-TENSIONED SHADE.

**A** Pull Bottom Rail down to bottom location. **B** Push the Bottom Rail up to top position.

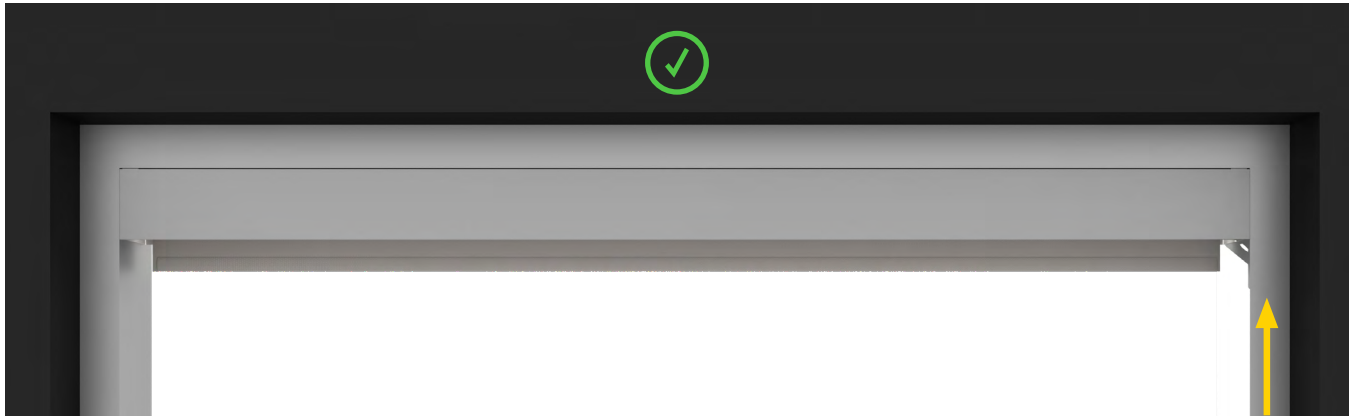
**A**



**B**

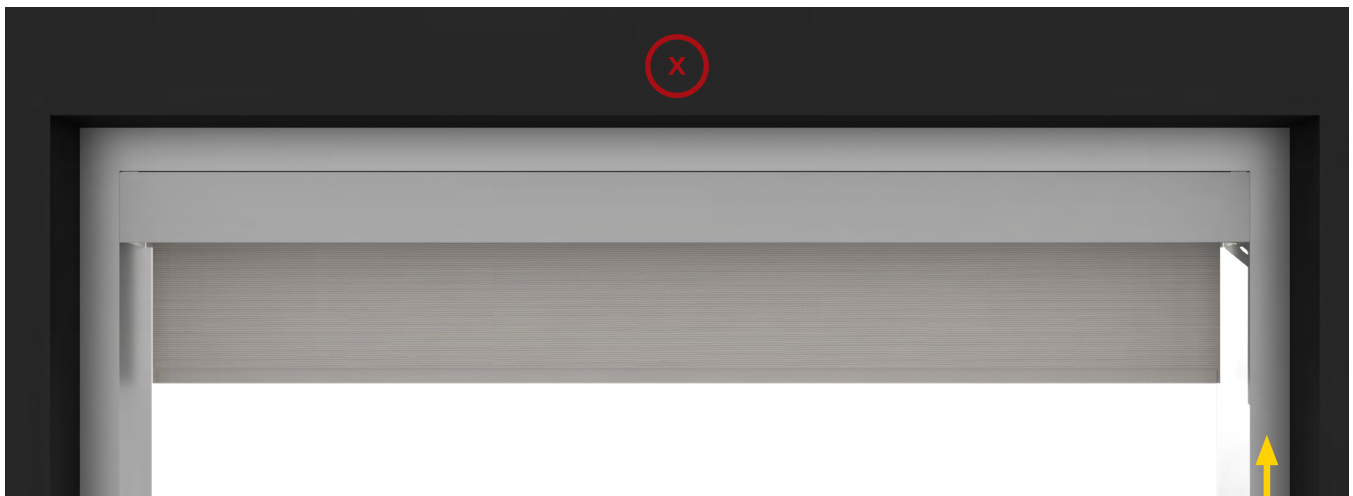


C If Bottom Rail raises at the desired speed, the correct number of pre-turns have been assigned.



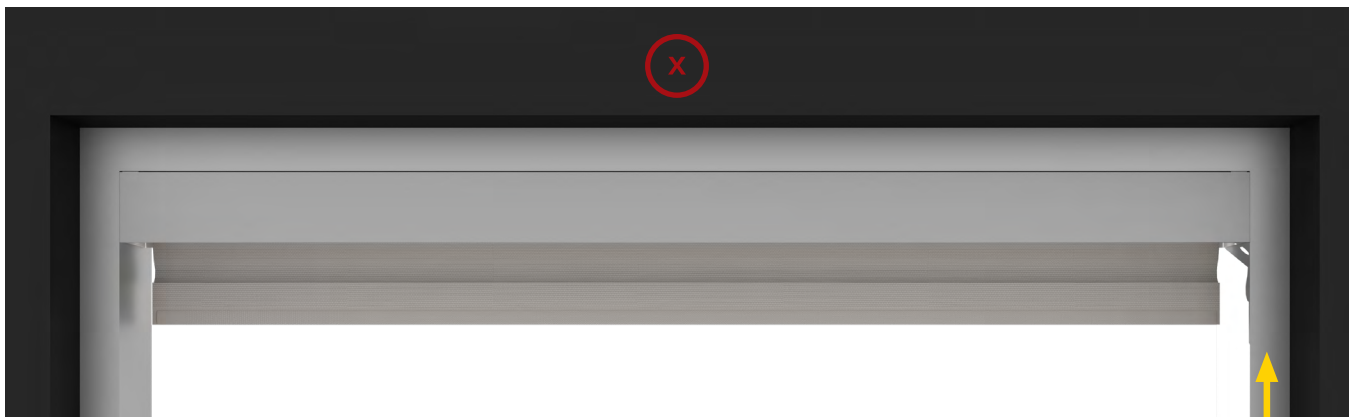
✓ Proceed to setting limits.

D If shade slows or falls from desired position then not enough pre-turns have been applied.



⊕ Add more pre-turns or move slider to lower number changing the spring size.

E Fast or automatic raising of the shade from desired position indicates excessive pre-turns.



⊖ Remove pre-turns or move slider to higher number changing the spring size.  
IF ADJUSTMENT IS NEEDED SEE PAGE 21-22

## CORDLESS | ADD OR REMOVE PRE-TURNS & SET LIMITS

### 2A ADD PRE-TURNS

Add pre turns using the spanner tool or by hand.

**A**



#### PRE-TURNS

Use the spring calculator/charts to find out the number of pre-turns required.



#### DIRECTION OF PRE-TURNS

LH Back Roll  
Clockwise

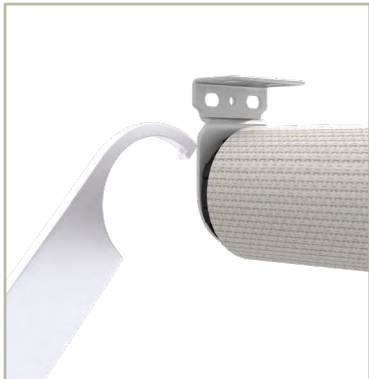
RH Front Roll  
Clockwise



### 2B REMOVE PRE-TURNS

Remove pre turns using the spanner tool or by hand.

**B**



#### PRE-TURNS

Use the spring calculator/charts to find out the number of pre-turns required.



#### DIRECTION OF PRE-TURNS

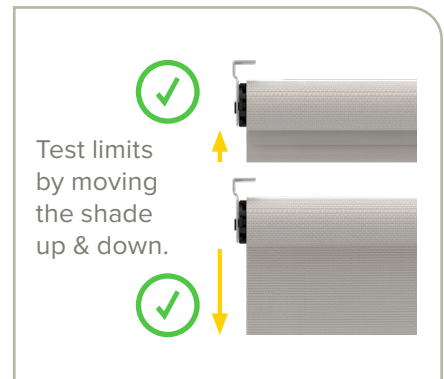
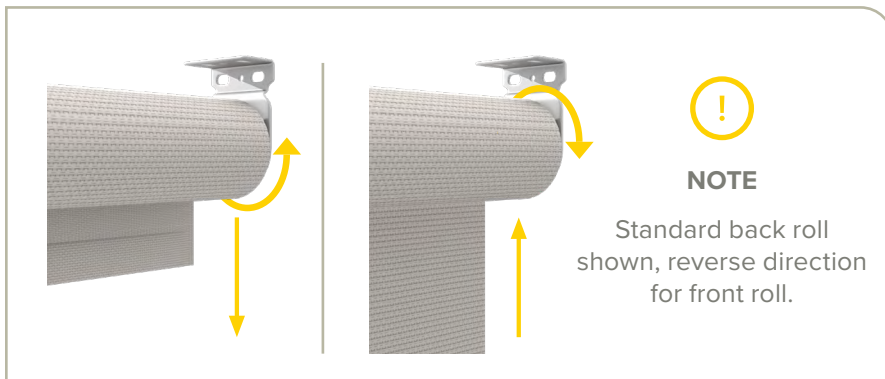
LH Back Roll  
Clockwise

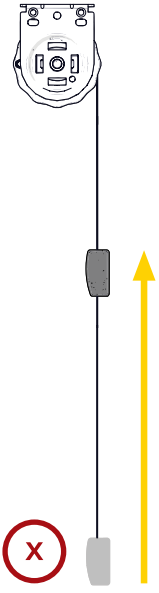
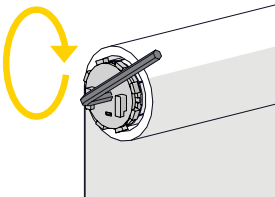
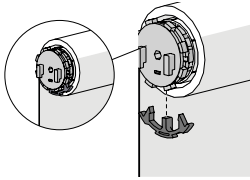
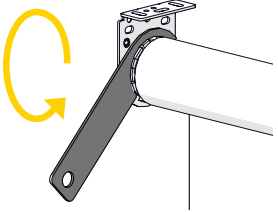
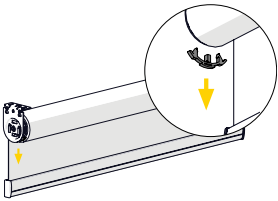
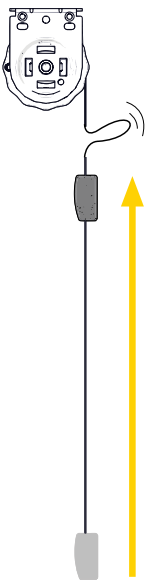
RH Front Roll  
Clockwise



### 3 SET LIMITS

Remove pre turns using the spanner tool or by hand.



NO	PROBLEM	CAUSE	SOLUTION
1	<p>Blind can't raise up.</p> 	<p>Not enough tension or incorrect spring size.</p>	<p><b>1</b> Check the pretension guide chart with blind size to ensure pretension used is correct.</p> <p><b>2</b> Add additional pretension until blind functions correctly.</p> <hr/> <p><b>OPTION 1</b></p> <p><b>STEP 1</b> Remove the blind and use PreTension Tool (Hex) to adjust pretension to the right number:</p>  <p><b>STEP 2</b> Use the Tension Lock to lock the pretension:</p>  <p><b>OPTION 2</b></p> <p>Use the Spanner Tool to adjust tension. Doesn't require blind to be removed, however adjustment is slower.</p>  <p><b>STEP 3</b> Mount the shade onto the brackets and remove the lock.</p> 
2	<p>Blind will raise quickly.</p> 	<p>Too much tension or incorrect spring size.</p>	<p><b>3</b> Ensure the recommend mass of weigh bar and ballast is used.</p> <p><b>4</b> Check the guide chart with blind size to ensure the position of adjusting plug is correct. The position can be changed by rotating the adjusting wheel. (Note the booster need be disassembled from to operate).</p> 